

Spring Ranch Property Map

The property consists of three large buildings on 10 scenic acres along Highway 1 and across from the bluffs of the Mendocino Coast. The Grand Victorian (Circ. 1860) sleeps 21 guests, and the Carriage Barn Loft (aka Honeymoon Suite) sleeps two. The Event Barn can be used for the rehearsal dinner, ceremony and/or reception. The outdoor area seats up to 200 guests.



(A) The Grand Victorian

This is one of the grandest Victorians on the California coast. It was built by the lumber and agricultural baron William Kent from the state of Maine. The unique structure has a: grand 20' x 40' living room with box beam ceiling, parlor with gas fireplace, formal dining room with exquisite crown moldings and Italian chandelier, remodeled kitchen with Thermador appliances, sunroom, multiple porches & decks, two stairways, three shared bathrooms, and the following eight bedrooms which can sleep up to 21.



The Grand Victorian, continued



1 – ALBION

This second floor bedroom has a king bed and southern meadow views. Two shared bathrooms are down the hall, one with a large shower and one with a shower/clawfoot tub.



2 – CASPAR

This second floor bedroom has a full bed and western ocean views. Two shared bathrooms are down the hall, one with a large shower and one with a shower/clawfoot tub. Connected to Elk.



3 – ELK

Located on the second floor of the Grand Victorian, this bedroom has a queen bed and western ocean views. Two shared bathrooms are down the hall, one with a large shower and one with a shower/clawfoot tub. Connected to Caspar.



4 – GARCIA

Located on the second floor of the Grand Victorian, this bedroom has two twin beds and northern eucalyptus grove & forest views. Two shared bathrooms are down the hall, one with a large shower and one with a shower/clawfoot tub.



5 – GUALALA

Located on the second floor of the Grand Victorian, this bedroom has three twin beds and northern eucalyptus & forest views. Two shared bathrooms are down the hall, one with a large shower and one with a shower/clawfoot tub. Connected to Mattole.



6 – MATTOLE

Located on the second floor of the Grand Victorian, this bedroom has a king bed, vaulted ceilings, and eastern forest views. A shared bathroom with a large shower is down a private stairway. Connected to Gualala.



7 – NAVARRO

Located on the first floor of the Grand Victorian, this bedroom has two full barn-beam bunk beds. A shared bathroom with a large shower is down the hall.



8 – NOYO

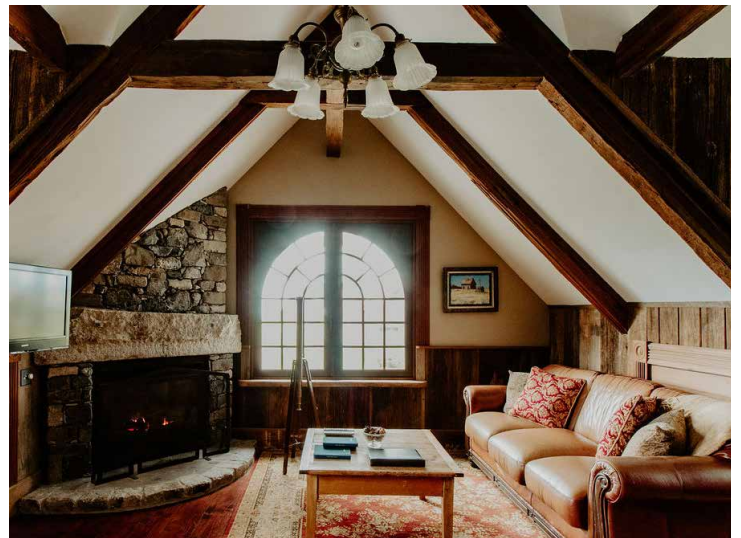
Located on the first floor of the Grand Victorian, this bedroom has two full barn-beam bunk beds. There is a shared ensuite bathroom with a large shower. This bedroom has its own entrance from the outside.

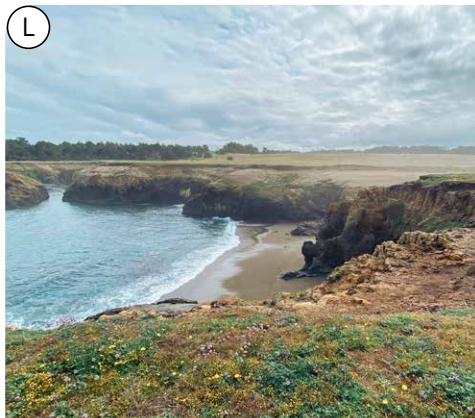
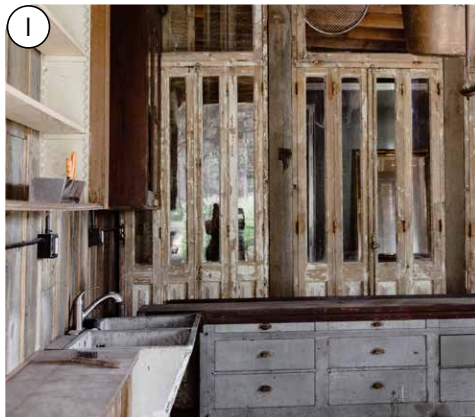
ⓓ Carriage Barn

The original redwood Carriage Barn from the 1860s includes an upstairs loft for guests including a full kitchen and a downstairs small event space accommodating up to 40 people.

9 – RUSSIAN

Located upstairs in the Carriage Barn, this exquisite loft which sleeps 2 has a: living room, stone gas fireplace, full kitchen, bathroom with cast iron tub/shower, and large bedroom with a 4-poster king bed. The loft has vaulted ceilings throughout and views of the ocean, eucalyptus grove, forest and meadows.





COMMON SPACES

B-DECK

Large deck with southern exposure and out of the wind. Field and forest views. Dining table & chairs for 10.

C-HOTTUB

Six-person hot tub on stone patio. Metal patio furniture and charcoal BBQ.

D-CARRIAGE BARN SMALLER EVENT SPACE

The downstairs of the Carriage Barn can be used for smaller gatherings or activities with under 40 people. The space has 12' high timber ceilings, Victorian lighting, intricate doors from Buenos Aires, and antique cabinetry.

E-CEREMONY SITES – There are a number of ceremony sites on or nearby the property:

EUCALYPTUS GROVE – A grove of huge eucalyptus trees south of the Event Barn

CYPRESS GROVE – A grove of cypress trees north of the Event Barn

OCEAN VIEW – A flat field north of the Event Barn with distant ocean views & views of Spring Ranch barns & State Park barns

STATE PARKS & MLT – There are many nearby ocean bluff ceremony sites on State Park and/or Mendocino Land Trust lands. A fee is required to use these sites.

F-STONE FIREPLACE

Massive outdoor stone & iron fireplace. Firewood on site.

G-EVENT BARN

Antique 1840's hand-hewn barn from Canada. Downstairs has herringbone brick floors, antique cabinetry, and ornate chandeliers. Upstairs has towering ceilings, vintage turn of the century displays, and views of the ocean, eucalyptus grove, forest and meadows. 100 approximate seated capacity downstairs for dining and 100 upstairs for ceremony.

H-STONE PATIO

The Event Barn is surrounded by a stone patio, perfect for outdoor dining or cocktails. 200 seated capacity.

I-KITCHEN/BATHROOMS

Caterers Kitchen includes a double sink, prep tables, cabinetry, and hookups for gas ranges. Bathrooms for the Event Barn and glamping include a women's restroom with two stalls and sink and a men's restroom with a urinal plus stall and sink.

J-STONE WALL

K-TRAILS IN SPRING RANCH PRESERVE / VANDAMME STATE PARK

Walk directly across the street to one of the most spectacular parks on the California Coast. This park consists of 100's of acres of meadows and forests, dramatic bluffs, and secluded beaches. There are multiple trails to explore this oasis. Watch the California Grey whales migrate in the fall and spring, seals pupping in the summer on various rocks and coves, and magnificent waves crashing into the cliffs in the winter.

L-SECLUDED BEACH

Enjoy the white sand beach below the bluffs with nearby tide pools.